



22.03.07 NIEMEYER/ ALVORADA





1.



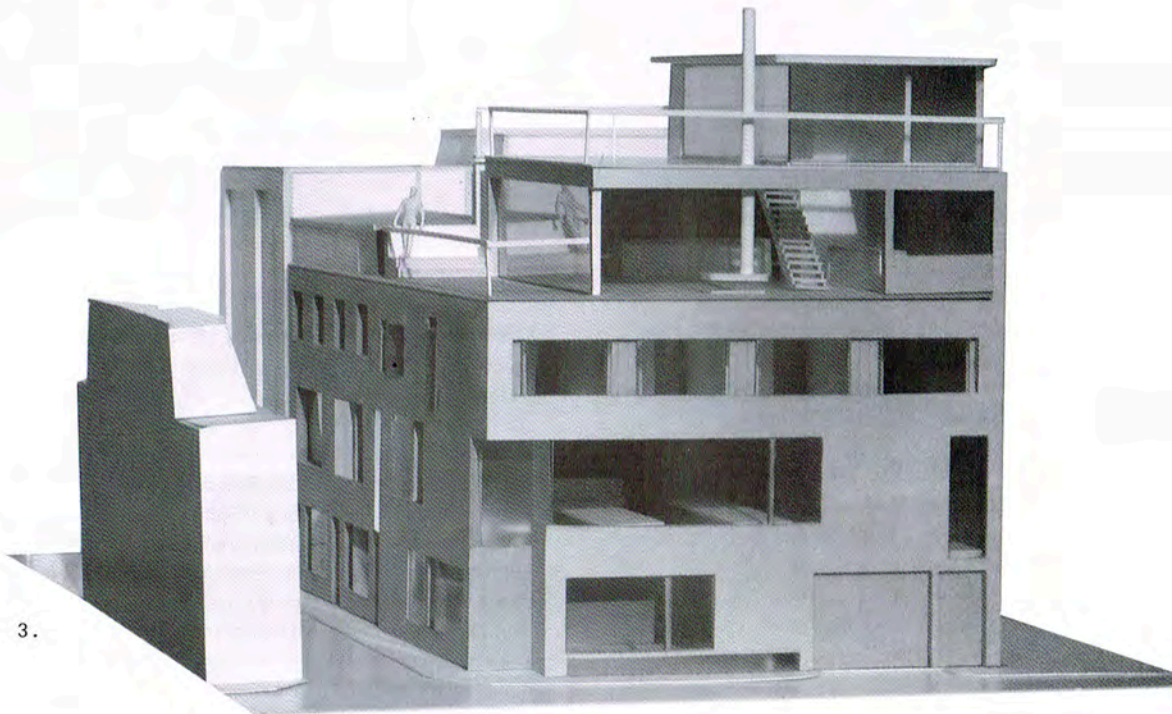
2.

1, 2 & 3. The five-storey building in east London will provide a home and office for husband-and-wife practice Theis and Khan

THEIS AND KHAN WORKS AT HOME

Theis and Khan Architects has won planning permission for this five-storey mixed-use development in Shoreditch, east London. The scheme involves replacing an existing two-storey post-war industrial building in a conservation area with a new six-unit building offering three commercial and three residential units. The husband-and-wife-run practice intends to use the first floor as its own office space, and the couple's family will use one of the upper-floor apartments. Clad with London stock brick, the 900m² concrete-framed building has been designed to be 'purposely lighter at the top.' The development will incorporate a ground-source heat pump, solar-thermal panels, grey-water recycling and a biomass combined heat and power system, along with other low-energy features. Work is set to begin this summer, with completion scheduled by autumn 2008.

By Richard Vaughan



3.